



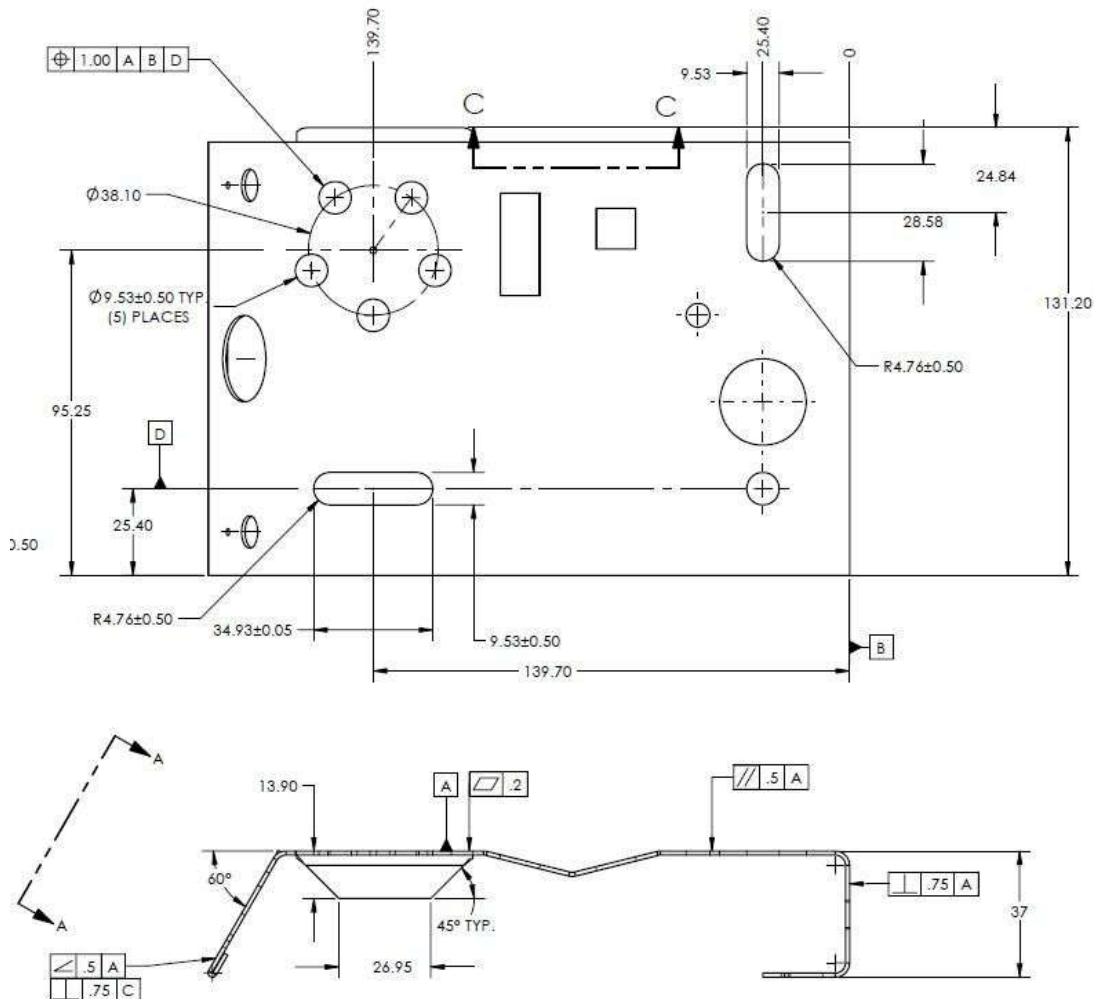
# IMPart - 1st Article Inspection

Report Author: Engineer Name  
Date: 1/17/2020

## Obejctive:

1. 3D Scan exisiting part
2. Compare 3D Scan of part to CAD
3. Report Deviations per drawing.

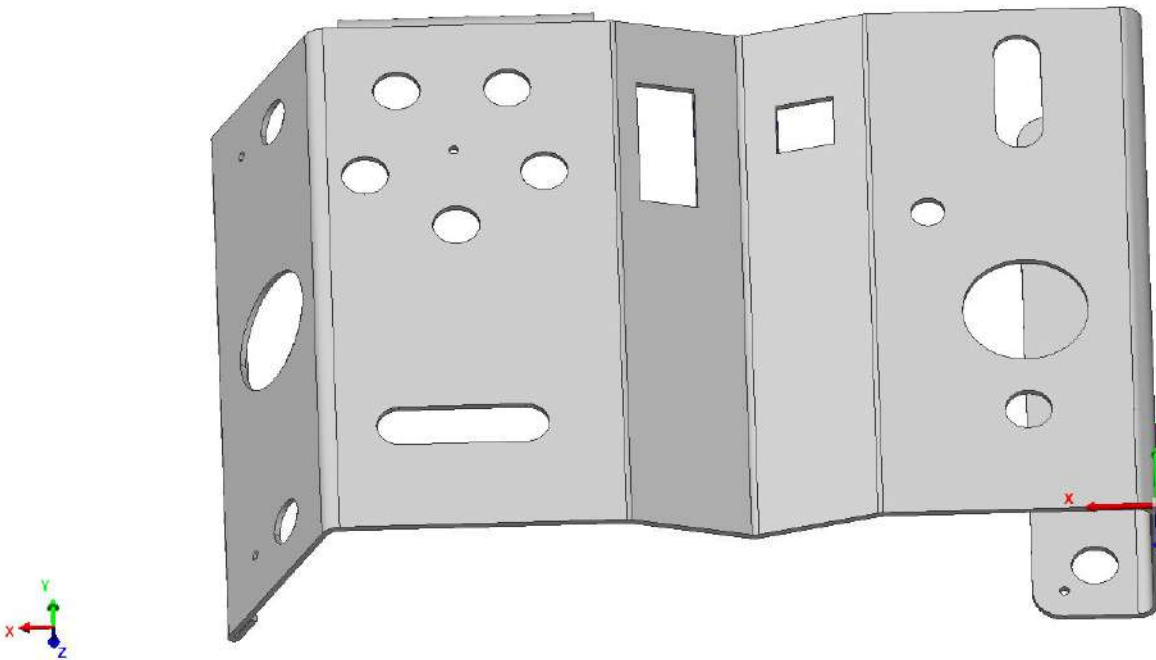
Note: All measurements in mm.



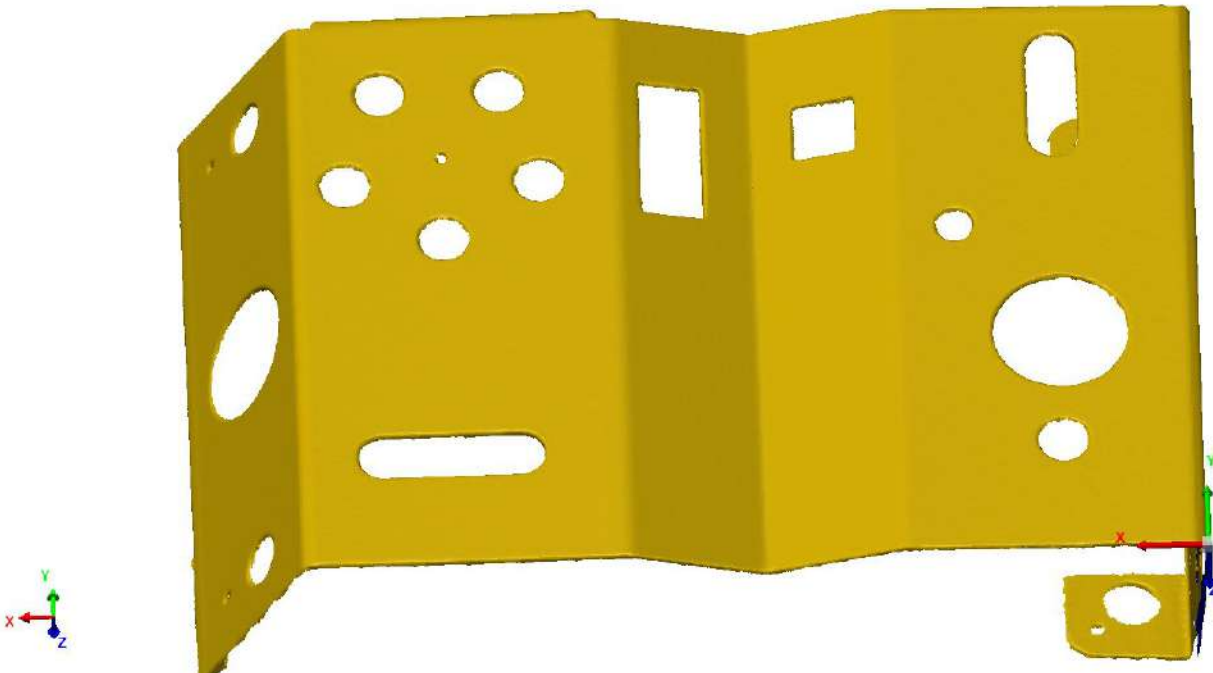
**Organization:** Digital Scan 3D LLC  
**Operator:** Engineer/Technician Name  
**E-mail:** Info@DigitalScan3d.com  
**Workspace:** Workspace 2  
**Project:** Impart Inspection - IMPart

**Part name:** IMPart  
**Part number:** A10052-001  
**Drawing #:** XYZ 123  
**Serial #:** XYZ 123  
**Device:** C500 Blue Light 3D Scanner

CAD Model



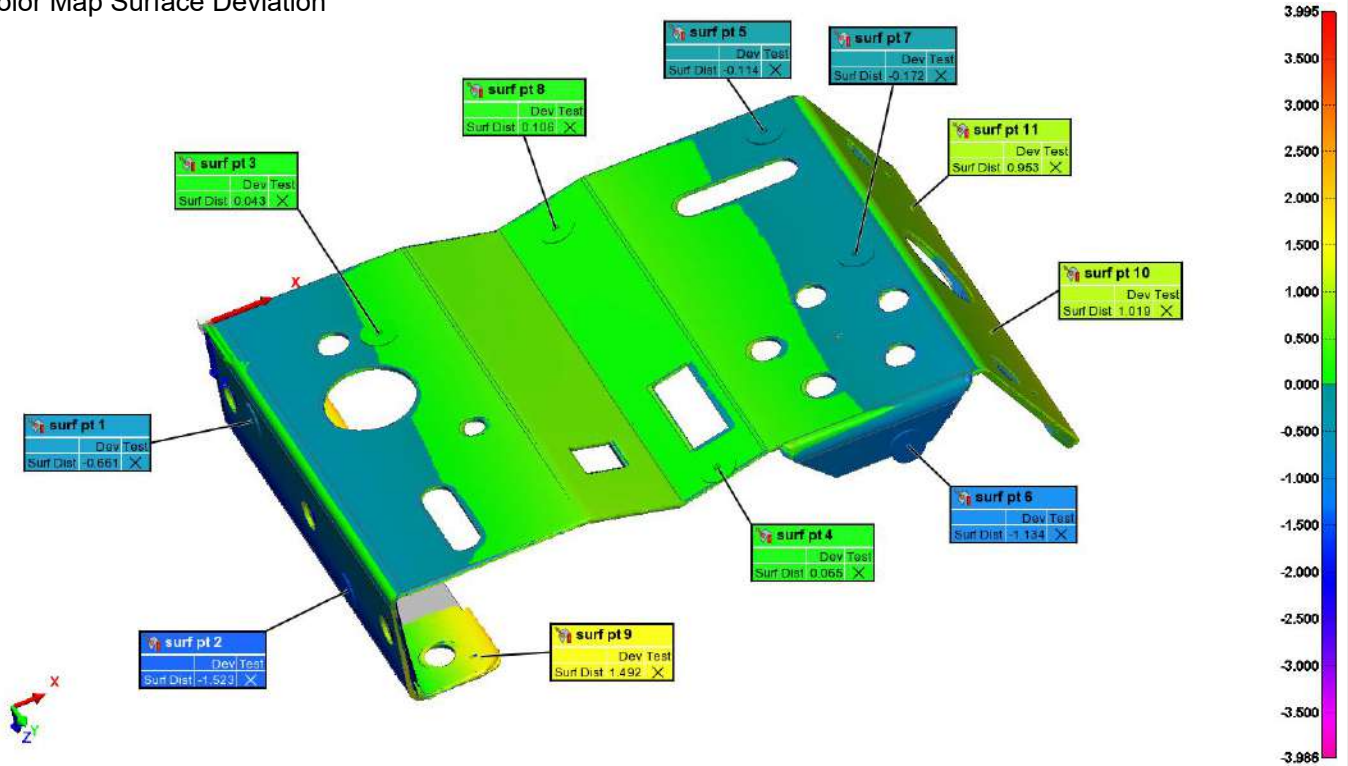
3D Scanned Data



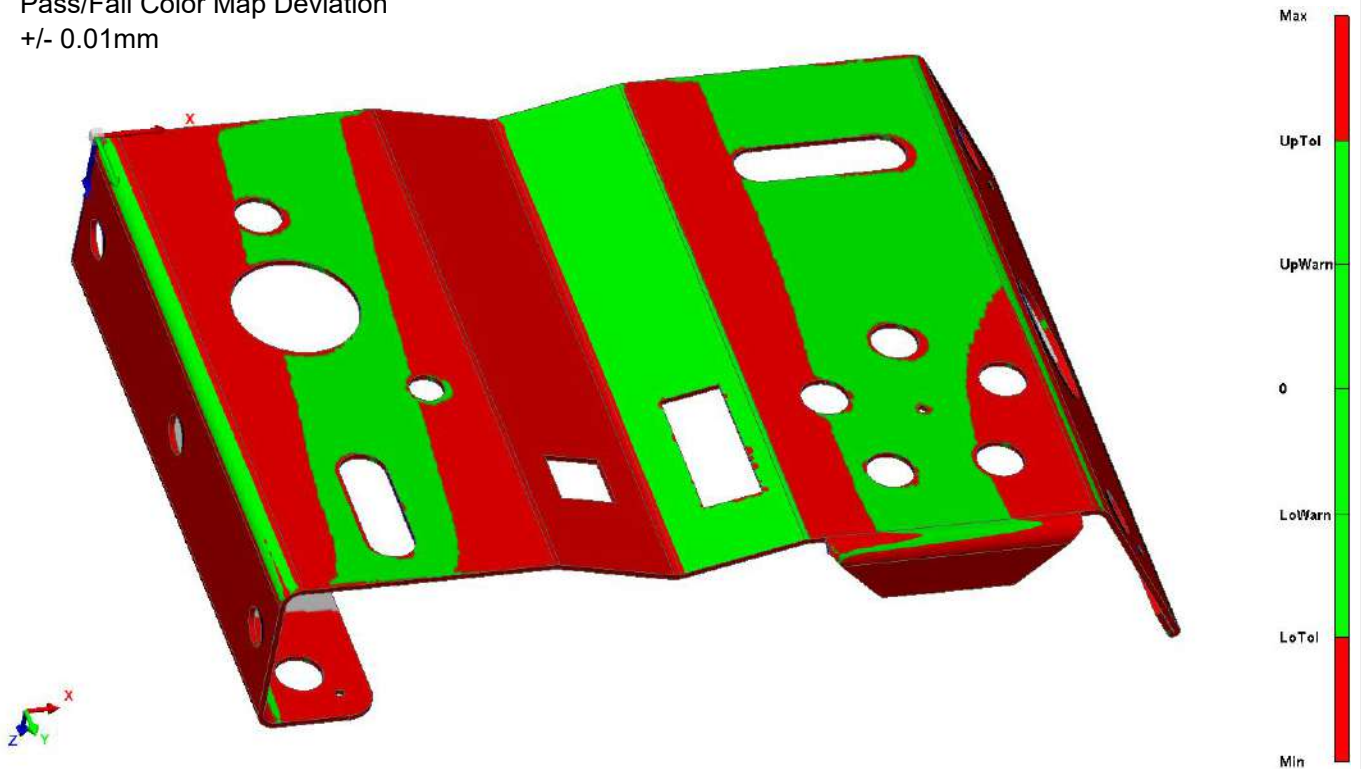
Organization: Digital Scan 3D LLC  
Operator: Engineer/Technician Name  
E-mail: Info@DigitalScan3d.com

Part name: IMPart  
Part number: A10052-001  
Piece: IMPart

### Color Map Surface Deviation

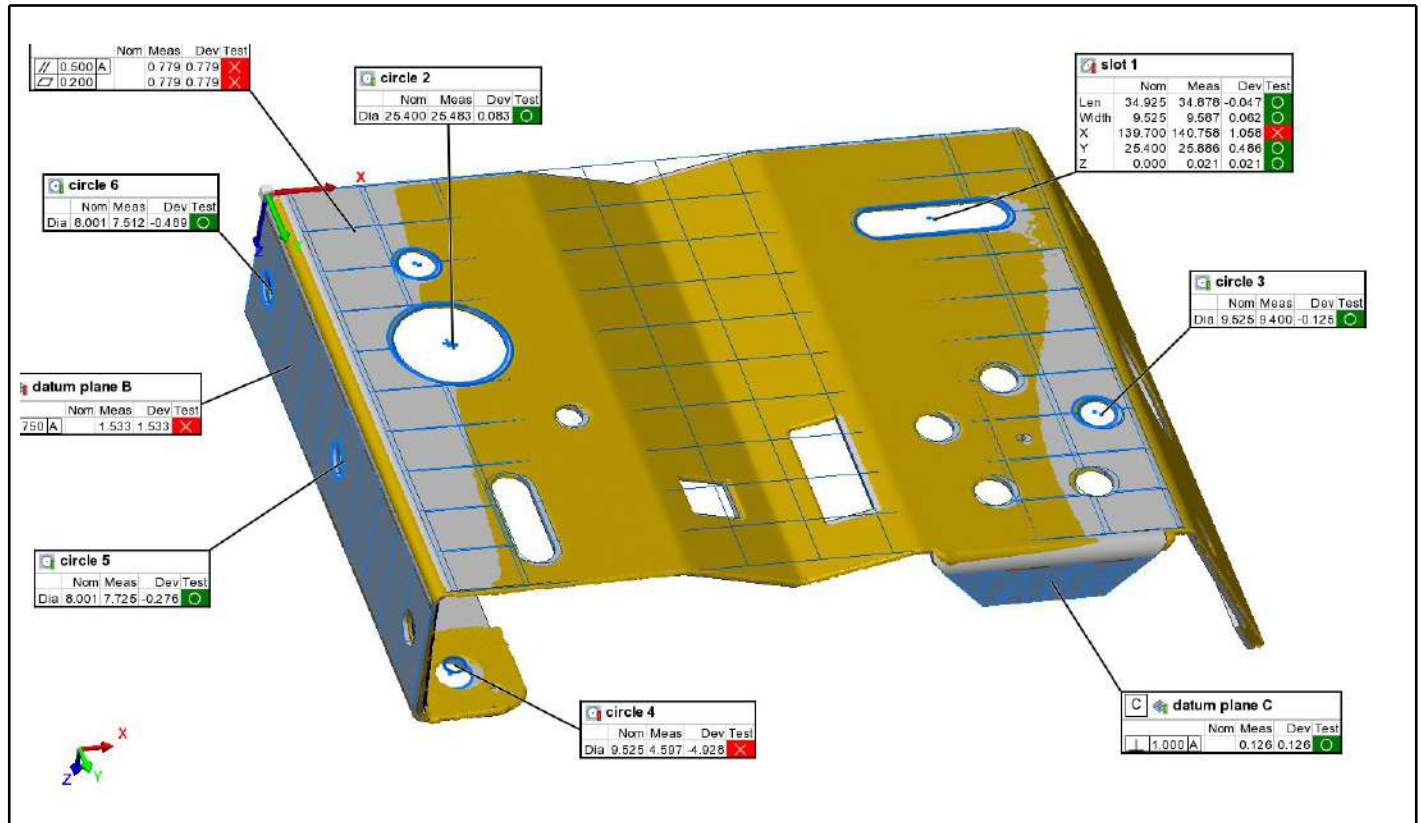


### Pass/Fail Color Map Deviation +/- 0.01mm



Organization: Digital Scan 3D LLC  
 Operator: Engineer/Technician Name  
 E-mail: Info@DigitalScan3d.com

Part name: IMPart  
 Part number: A10052-001  
 Piece: IMPart

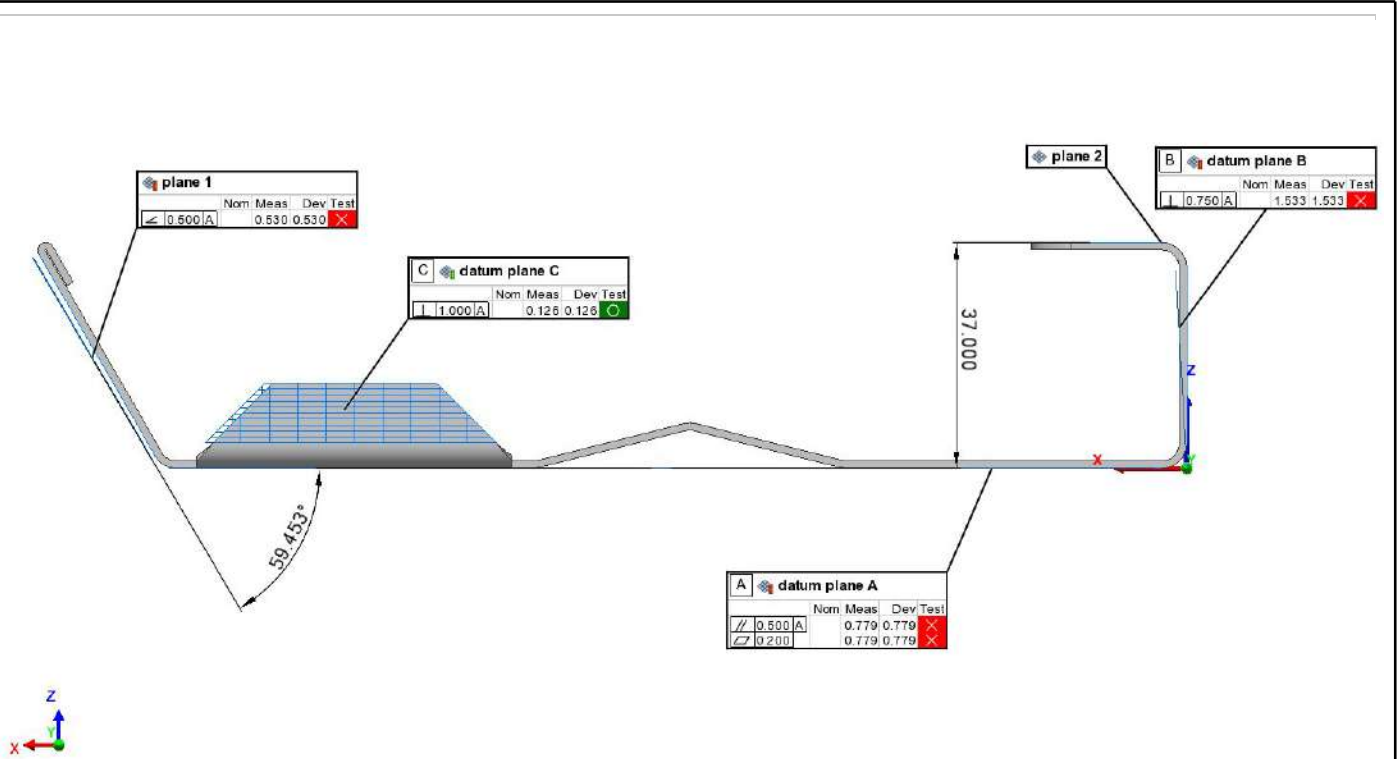


## Feature Table

Units: Millimeters  
 Coordinate Systems: world  
 Data Alignments: perpendicular planes

Name	Control	Nom	Meas	Tol	Dev	Test	Out Tol
datum plane A	∥ 0.500 A		0.779	0.500	0.779	Fail	0.279
	∥ 0.200		0.779	0.200	0.779	Fail	0.579
datum plane B	⊥ 0.750 A		1.533	0.750	1.533	Fail	0.783
datum plane C	⊥ 1.000 A		0.126	1.000	0.126	Pass	
circle 1	Diameter	9.530	9.441	±1.000	-0.089	Pass	
circle 2	Diameter	25.400	25.483	±1.000	0.083	Pass	
circle 3	Diameter	9.525	9.400	±1.000	-0.125	Pass	
slot 1	Length	34.925	34.878	±1.000	-0.047	Pass	
	Width	9.525	9.587	±1.000	0.062	Pass	
	X	139.700	140.758	±1.000	1.058	Fail	0.058
	Y	25.400	25.886	±1.000	0.486	Pass	
	Z	0.000	0.021	±1.000	0.021	Pass	
circle 4	Diameter	9.525	4.597	±1.000	-4.928	Fail	-3.928
circle 5	Diameter	8.001	7.725	±1.000	-0.276	Pass	
circle 6	Diameter	8.001	7.512	±1.000	-0.489	Pass	

<b>Organization:</b> Digital Scan 3D LLC	<b>Part name:</b> IMPart
<b>Operator:</b> Engineer/Technician Name	<b>Part number:</b> A10052-001
<b>E-mail:</b> Info@DigitalScan3d.com	<b>Piece:</b> IMPart



## Feature Table

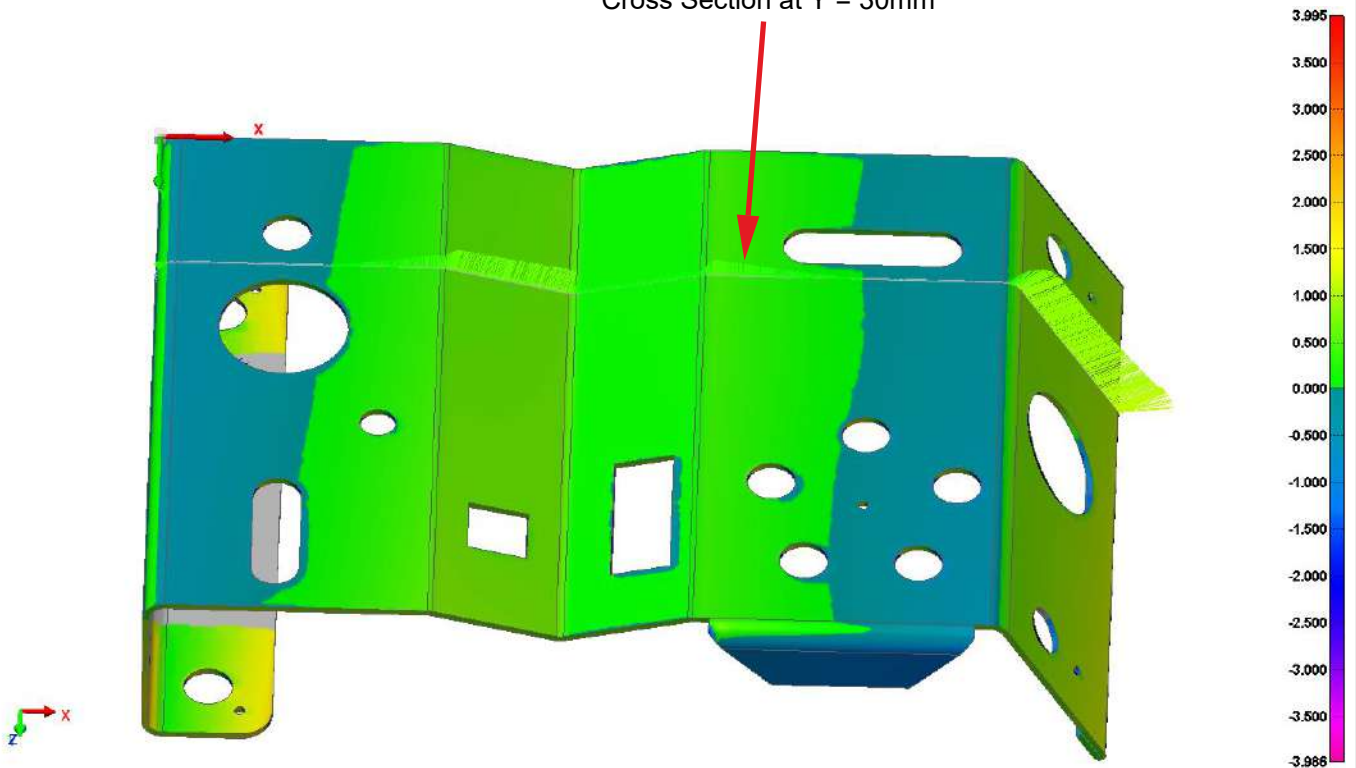
Units: Millimeters  
 Coordinate Systems: world  
 Data Alignments: perpendicular planes

Name	Control	Nom	Meas	Tol	Dev	Test	Out Tol
datum plane A	// 0.500   A		0.779	0.500	0.779	Fail	0.279
	⊥ 0.200		0.779	0.200	0.779	Fail	0.579
datum plane B	⊥ 0.750   A		1.533	0.750	1.533	Fail	0.783
datum plane C	⊥ 1.000   A		0.126	1.000	0.126	Pass	
plane 1	< 0.500   A		0.530	0.500	0.530	Fail	0.030
angle 1	3D Angle 1	60.000	59.453	±1.000	-0.547	Pass	
distance 1	3D Distance	37.000		±1.000			

Organization: Digital Scan 3D LLC  
 Operator: Engineer/Technician Name  
 E-mail: Info@DigitalScan3d.com

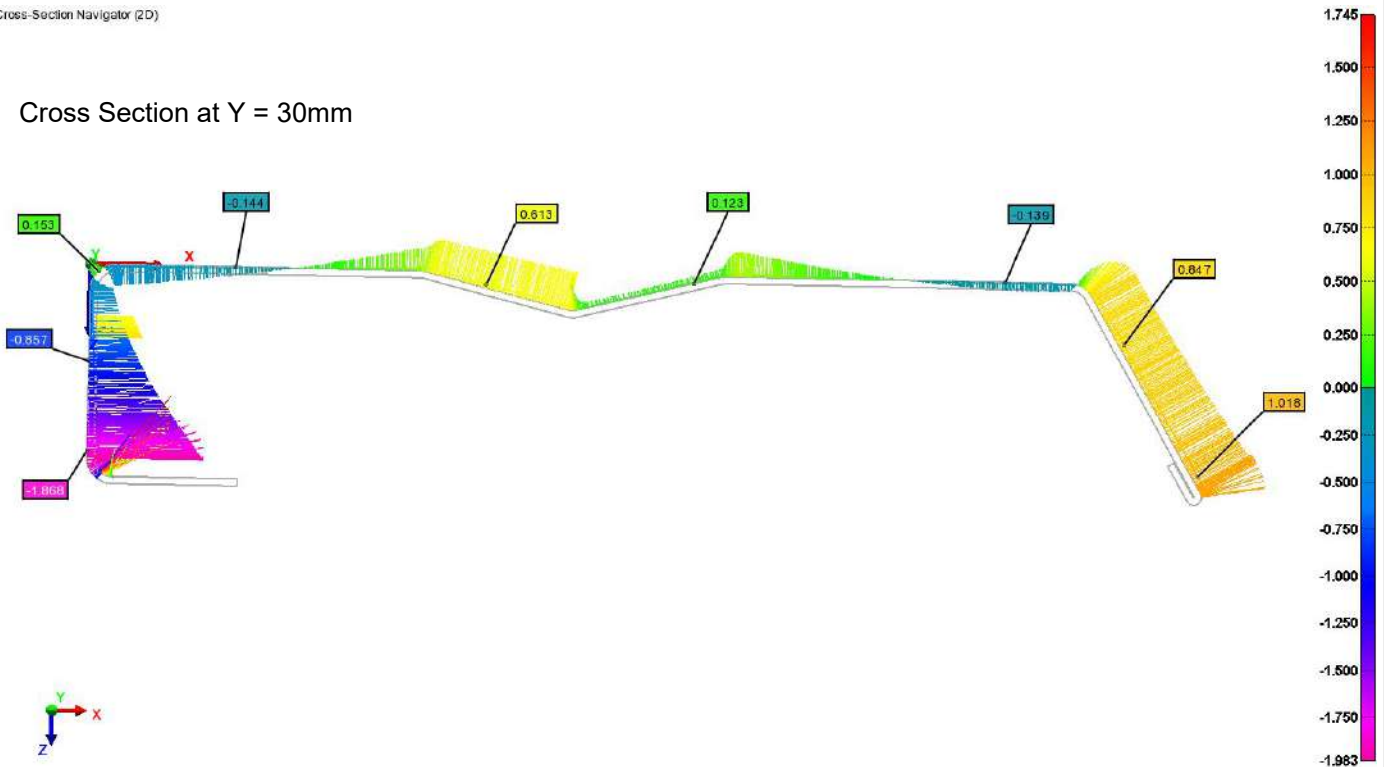
Part name: IMPart  
 Part number: A10052-001  
 Piece: IMPart

Cross Section at Y = 30mm



Cross-Section Navigator (2D)

Cross Section at Y = 30mm



Organization: Digital Scan 3D LLC  
 Operator: Engineer/Technician Name  
 E-mail: Info@DigitalScan3d.com

Part name: IMPart  
 Part number: A10052-001  
 Piece: IMPart